

wîhtamâkewin

·ΔCL9·Δᵓ



Weeneebayko Area Health Authority

·ΔσVd ΔU9^6Γ

ΓᵓΛLŊᵓ·Δ ᵓPL·Δ·Δσ`

Sharing News With You
Spring 2025 Community Newsletter

Redevelopment Project Underway and Picking up Steam

Construction has officially started on the new Weeneebayko Area Health Authority (WAHA) regional health campus in Moosonee.

(Page 2)

Indigenous Primary Care Team to Expand Culturally Safe Care

(Page 3)

Attawapiskat RPN Creates Safe Space for People in Recovery

(Page 4)

Breast Screening Program Adds People Aged 40-49

(Page 6)



Weeneebayko Area Health Authority

19 Hospital Drive, P.O. Box 664
Moose Factory, ON P0L 1W0
705-658-4544 www.waha.ca

Redevelopment Project Underway and Picking up Steam



Construction has officially started on the new Weeneebayko Area Health Authority (WAHA) regional healthcare campus in Moosonee.



Rendering of future of regional healthcare campus in Moosonee.

This is more than just the beginning of a building. It's the start of a stronger, healthier future for families, Elders, and future generations in our region.

Included in the new campus is a larger, modern hospital, Elder Care Lodge, visitor hostel and staff accommodations. The new hospital in Moosonee will have a larger emergency department, expanded mental health services, diagnostic imaging, and more. The Redevelopment Project also includes a new ambulatory care centre in Moose Factory.

“
Traditional healing, cultural values, and community voices have shaped every step of the planning process.
”

The new regional healthcare campus is being built with the First Nations people living in this region in mind—from the ground up. Traditional healing, cultural values, and community voices have shaped every step of the planning process. Input from community members and local Indigenous leadership has helped ensure that these new spaces are culturally safe and meet the growing health needs of our region.

The Redevelopment Project is the result of years of hard work, determination, and partnership between Indigenous leadership, WAHA, and the Ontario and federal governments. It shows what we can achieve when we come together.

Construction will take a few years to complete, but today we celebrate a big step forward. Meegwetch/Thank you to everyone who has helped bring this dream closer to reality.

The WAHA Redevelopment Project is a oshki kiskinowacihtawin/new beginning for our region. For regular updates on the Redevelopment Project and business opportunities follow the [WAHA Redevelopment Project's Facebook page](#).



Rendering of future ambulatory care centre in Moose Factory.

Indigenous Primary Care Team to Expand Culturally Safe Care



A new program aims to improve access to healthcare that is culturally safe for communities along the western James Bay and Hudson Bay coasts. The Indigenous Primary Care Team (IPCT) will focus on providing culturally safe care, addressing service gaps, and collaborating with local organizations to promote cultural and community events.

The IPCT will serve the communities of Moosonee, Moose Factory, Fort Albany, Attawapiskat, Kashechewan, and Peawanuck, with a mission to blend modern medical approaches with traditional knowledge. Utilizing a two-eyed seeing approach, the team aims to provide comprehensive care that respects and honors cultural traditions.

The IPCT's services are designed to enrich community health in several ways:

- **Direct Client Care:** The team will offer personalized healthcare that respects individual cultural traditions and healing methods.

Medly Program Receives Innovation Award



WAHA and the University Health Network (UHN) won an Ontario Health Innovation Award for Medly, a digital platform that helps heart failure patients monitor symptoms and alerts care teams to adjust treatment before hospitalization is needed.

- **Community Events:** A series of workshops and events will be organized to foster learning about health and well-being through cultural and educational activities.
- **Land-based Activities:** Participants will have opportunities to engage in activities that promote a connection with the land and its healing powers, supporting overall physical, mental, emotional, and spiritual health.
- **Building Connections:** The IPCT will collaborate with local and broader health organizations to ensure community needs are met.

Establishing the Indigenous Primary Care Team marks a significant step toward improving healthcare accessibility and integration of cultural practices, fostering a healthier future for our communities.



Pictured from left to right: Stella Kosuszko, nurse practitioner, UHN; Dr. Heather Ross, Head, Division of Cardiology, Peter Munk Cardiac Centre, UHN; Kristen Beck, RPN, Medly Clinical Coordinator, WAHA; Anne Simard, Director, Research, Ted Rogers Centre for Heart Research, UHN.

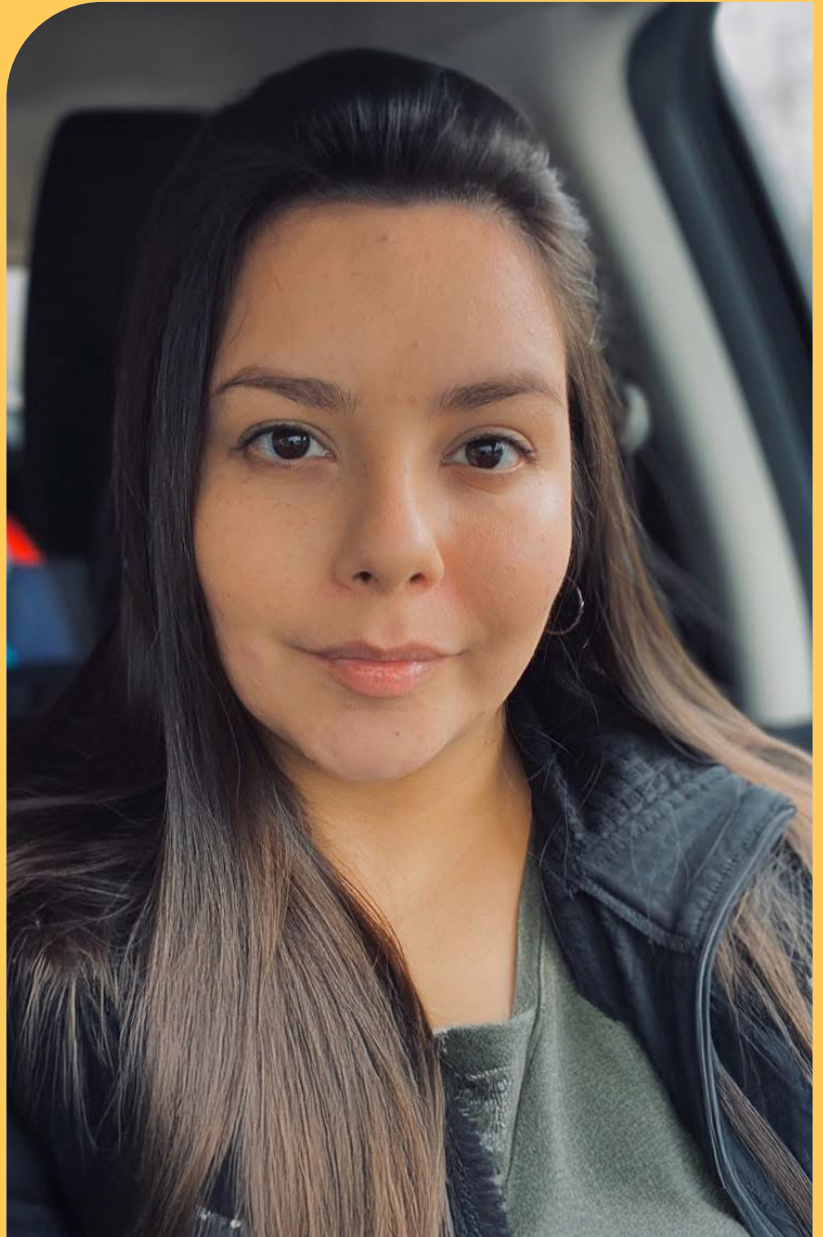
Attawapiskat RPN Creates Safe Space for People in Recovery

Juliette manages a weekly addictions clinic at the Attawapiskat Hospital, providing a safe space for community members to navigate recovery while remaining in their community. Her work helps bridge the gap between First Nations people and the western healthcare system.

Currently, she is pursuing her Bachelor of Science in Nursing at Laurentian University.

After finishing her bachelor's degree, Juliette plans on pursuing a master's degree in mental health. She aims to enhance Indigenous people's mental health by integrating traditional practices often overlooked in mainstream medicine.

Balancing motherhood and education have been challenging, but it has also motivated her. Through her experiences, Juliette says she has learned the importance of seeking help and encourages others to do the same.



Naloxone Can Save Lives

Dangerous substances have been circulating in our communities. Giving Naloxone during an overdose can restore normal breathing and consciousness and even prevent death. Talk to your health care provider for more information.



Message from the President and CEO

Enjoy the First Issue of Wihtamâkewin



Dear community members,

It's my pleasure to introduce the first edition of our new community newsletter, Wihtamâkewin. At the Weeneebayko Area Health Authority (WAHA), we recognize that healthcare is not just about clinical care—it's about building meaningful relationships with the people we serve. That's why we've chosen a name that reflects this deeply held value.

Wihtamâkewin means "to communicate" in Cree. We selected this name to honor the Indigenous communities who have long called this land home, and to reflect our commitment to respectful and inclusive dialogue with everyone in our region.

Through this newsletter, we aim to keep you informed about what's happening at WAHA and across all our sites — from new services and health initiatives to community events and patient stories. We'll also share wellness tips, recognize the efforts of our incredible staff, and provide information about how you can engage with us in making our communities healthier.

We see communication as a two-way street, later this spring and into the summer we will be organizing community engagement sessions to get your input and ideas as we develop a ten-year strategic plan for WAHA. What should our goals and priorities be? What should care feel and look like when our new regional healthcare campus opens in a few years?

Meegwetch/Thank you for being a vital part of our hospital family. We're excited to begin this journey of connection, learning, and shared purpose through future issues of Wihtamâkewin.

With gratitude,

President and CEO
Weeneebayko Area Health Authority



Breast Screening Program Adds People Aged 40-49

As of October 2024, the Ontario Breast Screening Program (OBSP) now includes individuals aged 40–49. Eligible women, two-spirit, transgender, and non-binary people can self-refer for a mammogram, covered by OHIP. Breast cancer is the second most common cancer in women. Mammograms — X-rays of the breast — can detect changes too small to feel, making regular screening every two years essential.

Although breast cancer can occur at any age, it is most common in those aged 50–74. People in this group can get screened through OBSP without a referral.

At WAHA, mammography services are offered at Weeneebayko General Hospital. Joni Corston-Moore (Pictured right), our local technologist, has supported OBSP screenings for six years.

To check eligibility or book an appointment, call 705-658-4544, ext. 2305.



Specialty Clinics Reminder

Friendly reminder, there are frequent specialty clinics that visit all communities in our region.

Keep an eye on our [Facebook page](#) for the latest information!



Weeneebayko Area Health Authority

·Δσ·Vd ΔU9°bΓ

Γ·oΛLŌr·Δ ΔPL·Δ·Δσ`

19 Hospital Drive, P.O. Box 664
Moose Factory, ON P0L 1W0
705-658-4544 www.waha.ca